



WORLD'S BEST
ALLOY BULLBARS

East Coast Bullbars (ECB Pty Ltd)

Tel: 07 3897 5700

Fax: 07 3283 1168

ecb@ecb.com.au www.ecb.com.au

29 Snook St
Clontarf QLD 4019
Australia

Po Box 122
Margate QLD 4019
Australia

NB6H14SY / NB6H12SY

REPLACES: 18.07.05
REVISED: 23.07.10

FITTING INSTRUCTIONS

VY HOLDEN ADVENTRA / CROSS 8 / UTE / S / SS / EXECUTIVE / ACCLAIM 63MM SERIES 2 NUDGE BAR VEHICLE FRONTAL PROTECTION SYSTEM (VFPS) FOR AIR BAG AND ADR COMPLIANT VEHICLES

Check installation hardware before commencing.

NOTE: Treat all drilled holes with rust inhibitor.

1. Lift Bonnet.
2. Bumper cover is to be removed.
Adventura and Cross 8: Three PK screws at top of grille, four PK self-tapping screws (each side) at bumper cover side returns. Three PK self-tapping screws (each side) from lower plastic cover, three 10mm head bolts from rear of aluminium cover. Unclip at sides by pulling bumper cover outwards. **See figure 1. NOTE:** Disconnect fog lights as removing.
S and SS Models: Three PK screws at top of grille, two plastic PK clips under number plate area, two PK self-tapping screws (each side) one at top and one at bottom of bumper cover side returns. Unclip at sides by pulling bumper cover outwards. **See figure 1. NOTE:** Disconnect fog light if fitted.
3. Remove horns.
4. Remove air dam from front of chassis. Four plastic clips (Adventura / Cross 8 and SS Models).
5. Remove steel bumper cover support from chassis.
6. Position steel mounting brackets (supplied) over studs on bumper cover support. **See figures 2 & 3.** Attach steel mounting bracket to the bumper cover support using the 3/8 x 1 ¼ bolts, washers on 400mm wire (supplied) i.e. feed bolts through end of bumper cover support to protrude out through steel mounting brackets. Attach washers/nuts (supplied) **FINGER TIGHTEN ONLY.**
7. Re-attach bumper cover support to chassis. Reattach horn/s **See figures 4, 5 and 6.** Use original nuts **FINGER TIGHTEN ONLY.**
8. Ensure steel mounting brackets are centred on vehicle. The distance between the mount angles should be approximately 620mm (check protection bar measurement for protection bar to mount on inside of steel mounting brackets). **TIGHTEN ALL NUTS.**
NOTE: Ensure any fluid/air conditioner lines are well clear of steel mounting brackets. Bend lines clear if necessary.
9. Attach steel angle brackets to captive nuts on steel mounting brackets using three 10mm flat washers (each side) (supplied) to space steel angle bracket 9mm from steel mounting bracket Use 3/8 x 1 ½ bolt (supplied). **See Figure 7.** Push hard up against bumper cover support and **TIGHTEN. See figure 8. Note position of off centre slot hole. See figure 9.**

Using the steel angle brackets as a guide drill a 10mm hole (each side) through bumper cover support. Be sure to drill in centre of slot hole. Treat raw metal with a rust inhibitor. **See figure 10.** Feed 3/8 x 1 ¼ bolts/washers on 400mm wire in from end of bumper cover support. Attach washers/nuts **FINGER TIGHTEN ONLY.** Then remove the 1-½ bolt and spacer washers. **See figure 11.**



East Coast Bullbars (ECB Pty Ltd)

Tel: 07 3897 5700

Fax: 07 3283 1168

ecb@ecb.com.au www.ecb.com.au

29 Snook St
Clontarf QLD 4019
Australia

Po Box 122
Margate QLD 4019
Australia

WORLD'S BEST
ALLOY BULLBARS

10. Position steel support brackets behind steel mounting brackets. Use 3/8 x 1 1/2 bolts, nuts and washers (supplied). **See figure 12.** Ensure support bracket is hard against chassis. **TIGHTEN TO STEEL MOUNTING BRACKETS. NOTE:** Insert bolt from inside. **NOTE:** Cross 8/Avemtra support bracket for passenger side has cut out to fit around towing bracket chassis support. **See figure 13.**
11. Using support bracket as a guide drill a 10mm hole through chassis. **See figure 14.** Feed 3/8 nut, washer on wire in through front of chassis (each side). **See figure 15.** Use 3/8 x 1 1/2 bolt and washers. **TIGHTEN.**
12. Bend wire on all bolts around chassis and crimp with pliers so wire is held tight to avoid rattling, trim off any excess wire. **See figure 16.**
13. **For SS Models** reattach air dam. **See figure 17.**
14. **For Adventra and Cross 8 Models** trim air dam to fit around steel mounting brackets and reattach to vehicle. **See figures 18 and 19.**
15. **Acclaim and Executive Models** Remove grille from lower bumper cover. **See figure 20.**
NOTE: Lower grille can either be removed and left off or trimmed to fit around protection bar mounts.
16. **Adventra, Cross 8 and SS models:** Trim bumper cover to fit around steel angle bracket. **See figure 21.**
17. Reattach bumper cover to vehicle. Reconnect fog lights if fitted.
18. Attach ECB protection bar to inside of steel mounting brackets. Use 3/8 x 1 1/2 bolts and nuts (supplied). Reattach steel angle bracket over protection bar alloy mount. **See figure 22. FINGER TIGHTEN ONLY.**
19. Level protection bar with vehicle. **See figures 23, 24, and 25 for side views.** **TIGHTEN** front bolts/nuts firstly and then **TIGHTEN** steel angle bracket to bumper cover support, then **TIGHTEN** all other bolts and nuts.

ENSURE NUMBER PLATE IS CLEARLY VISABLE

Note: When fitting/refitting the licence plate to the vehicle, ensure there is no obstruction to licence plate vision in accordance with local authorities. If required relocate licence plate to an alternate location.

Further VFPS Notes:

- a) Do not attach VFPS to the vehicle using anchorages not intended for this purpose (e.g. engine mounting bolts).
- b) Do not use this product for any vehicle make or model, other than those specified by the VFPS manufacturer.
- c) Do not remove the plaque or label from the VFPS.
- d) Do not modify the structure of the VFPS in any way.
- e) No accessory or fitment should project forward of the VFPS forward profile.
- f) **ENSURE THESE INSTRUCTIONS ARE LEFT WITH VEHICLE OWNER AND/OR OPERATOR.**

IMPORTANT INFORMATION

Periodically check bolts and nuts for correct tightness, especially if travelling on rough roads

FITTING KIT

2 – Steel mounting brackets (pair)	2 – 3/8 nuts, washers on 200mm wire.
2 – Steel angle brackets (pair)	8 – 3/8 nuts.
2 – Steel support brackets. (pair)	16 – 3/8 flat washers (including 6 spacer washers)
4 – 3/8 x 1 1/4 bolts, washers on 400mm wire.	12 – 3/8 spring washers
8 – 3/8 x 1 1/2 bolts.	



East Coast Bullbars (ECB Pty Ltd)

Tel: 07 3897 5700

Fax: 07 3283 1168

ecb@ecb.com.au www.ecb.com.au

29 Snook St
Clontarf QLD 4019
Australia

Po Box 122
Margate QLD 4019
Australia



Figure 1

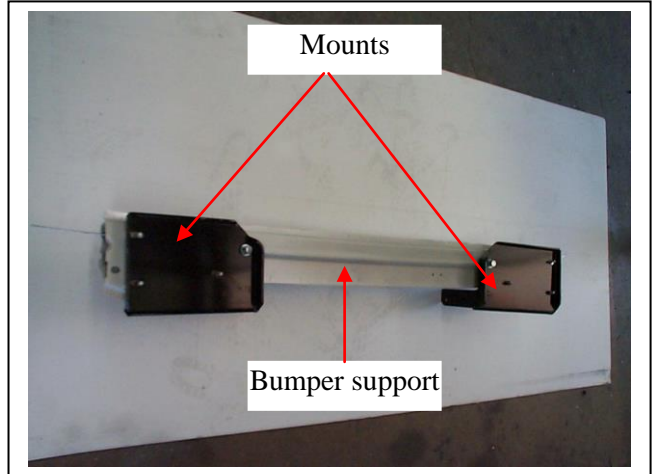


Figure 2

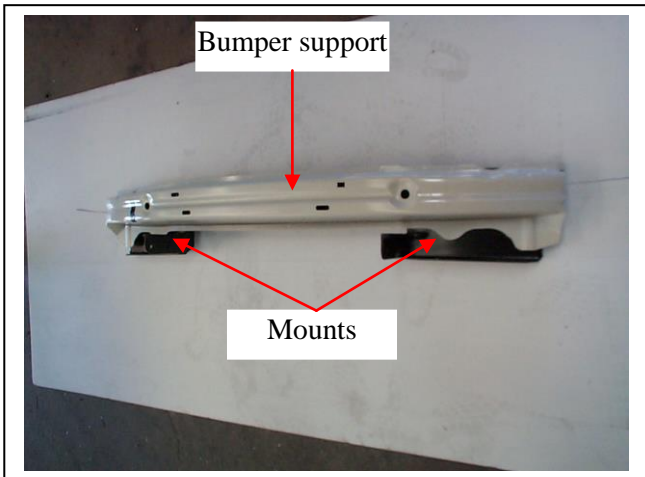


Figure 3

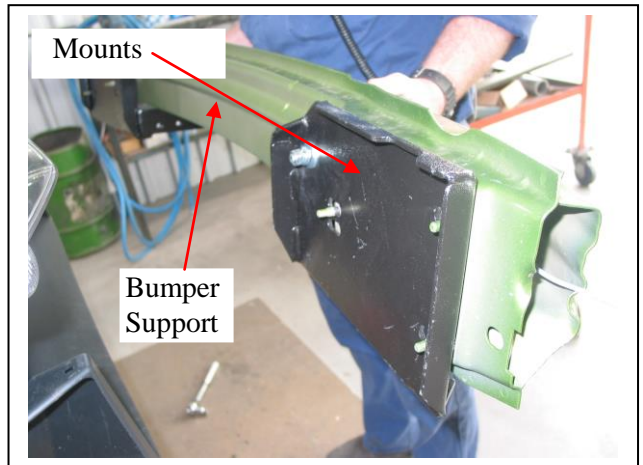


Figure 4

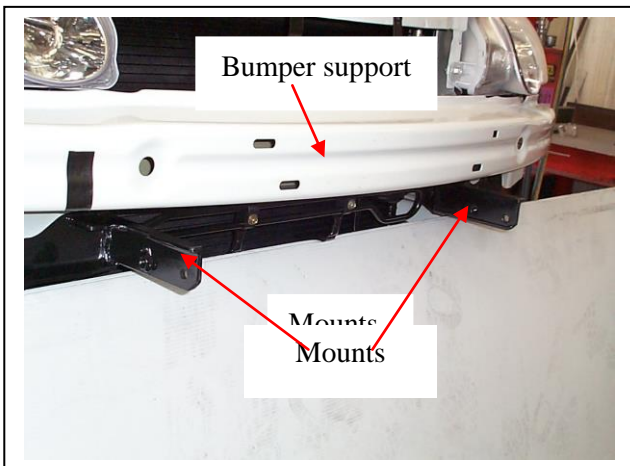


Figure 5

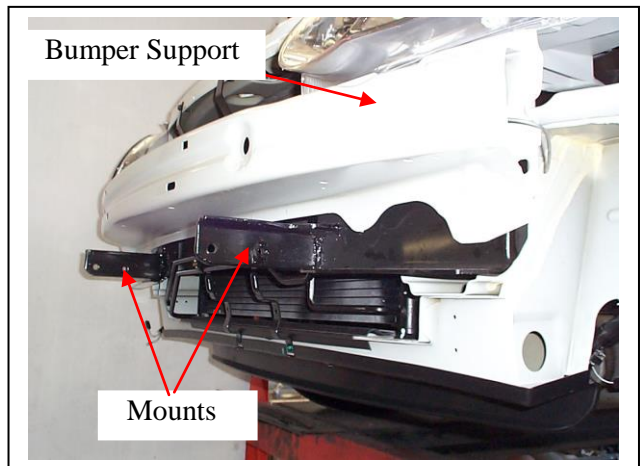


Figure 6



Steel angle bracket

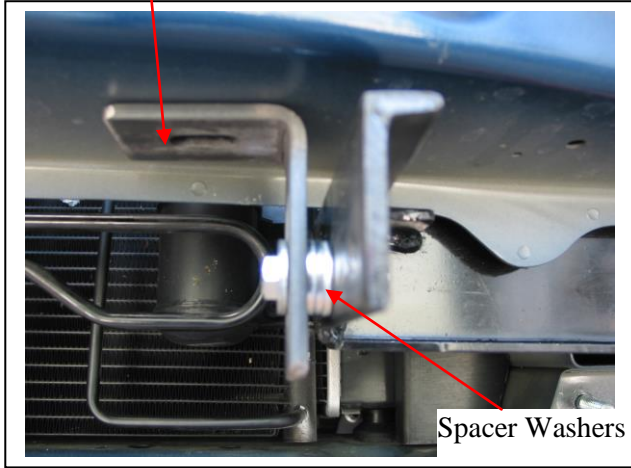


Figure 7 - Passenger side shown

Bumper cover support

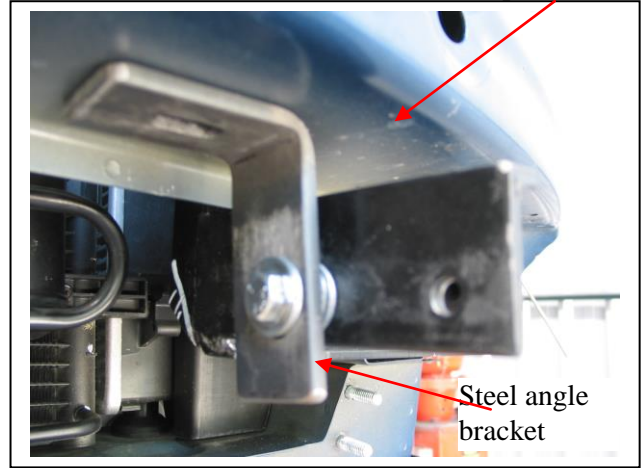


Figure 8 - Passenger side shown

Note position of
off centred slot.

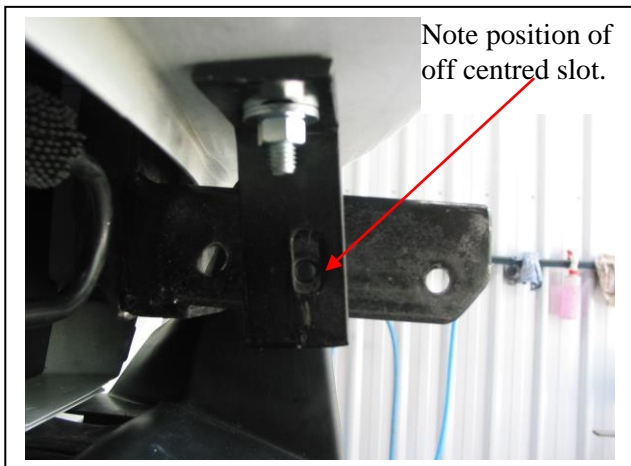


Figure 9 – Passenger side shown

Steel angle bracket Spacer washers

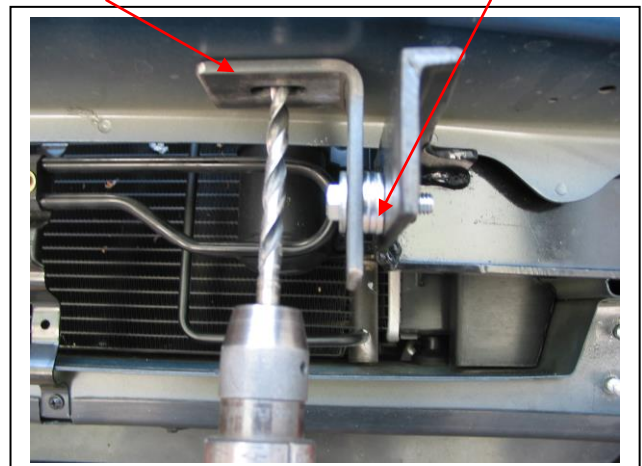


Figure 10 – Passenger side shown

3/8 x 1 1/4 bolt,
washer on wire

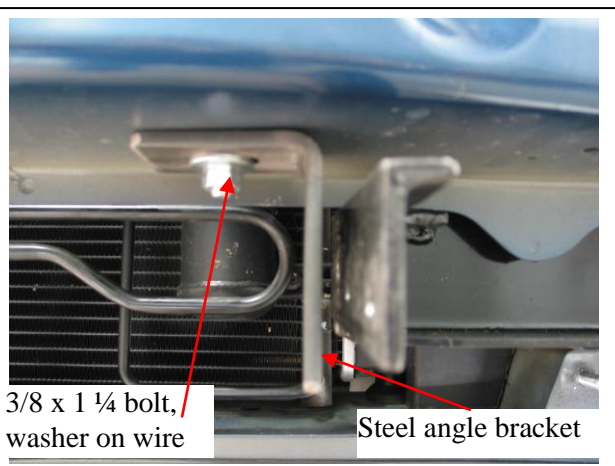


Figure 11

Steel support
bracket

Steel mounting
bracket

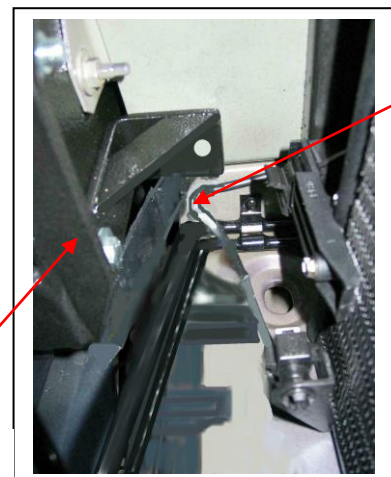


Figure 12 – Drivers side shown.



**WORLD'S BEST
ALLOY BULLBARS**

East Coast Bullbars (ECB Pty Ltd)

Tel: 07 3897 5700

Fax: 07 3283 1168

ecb@ecb.com.au www.ecb.com.au

29 Snook St
Clontarf QLD 4019
Australia

Po Box 122
Margate QLD 4019
Australia

Original towing bracket
chassis support

ECB support
bracket

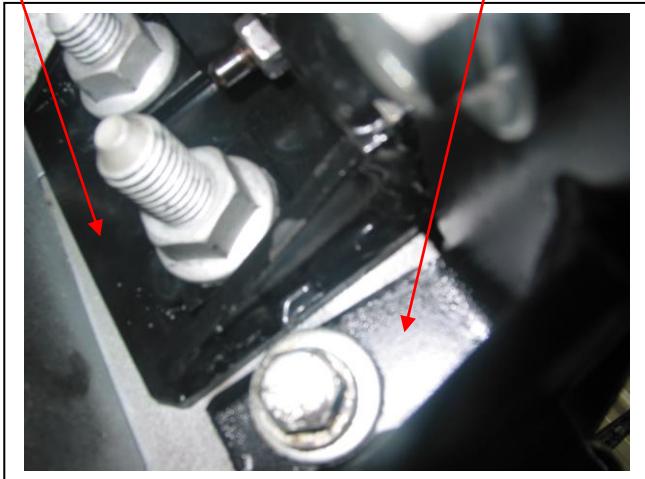
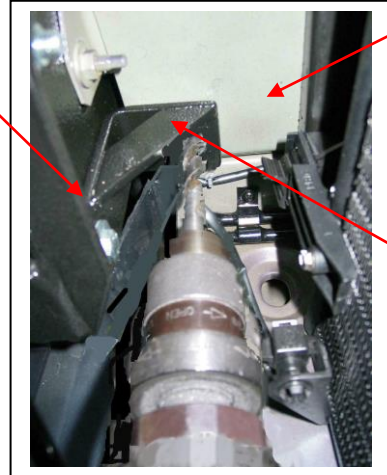


Figure 13 – Passenger side shown

Steel
mounting
bracket

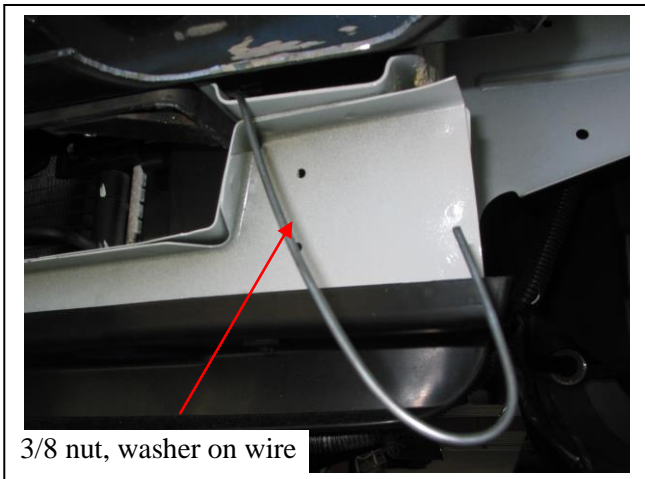


Chassis

Steel support
bracket

NOTE: Gusset
at top

Figure 14 – Drivers side shown.



3/8 nut, washer on wire

Figure 15



Crimp wire to avoid rattling

Figure 16

Plastic air dam



Figure 17 – SS Model shown



Figure 18 – Adventra and Cross 8 shown
Air dam trimmed to fit around steel mounting brackets



East Coast Bullbars (ECB Pty Ltd)

Tel: 07 3897 5700

Fax: 07 3283 1168

ecb@ecb.com.au www.ecb.com.au

29 Snook St
Clontarf QLD 4019
Australia

Po Box 122
Margate QLD 4019
Australia

WORLD'S BEST
ALLOY BULLBARS

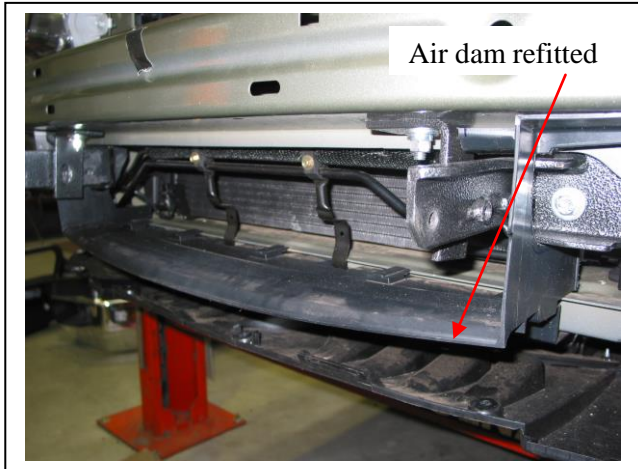


Figure 19 – Adventra and Cross 8 Shown

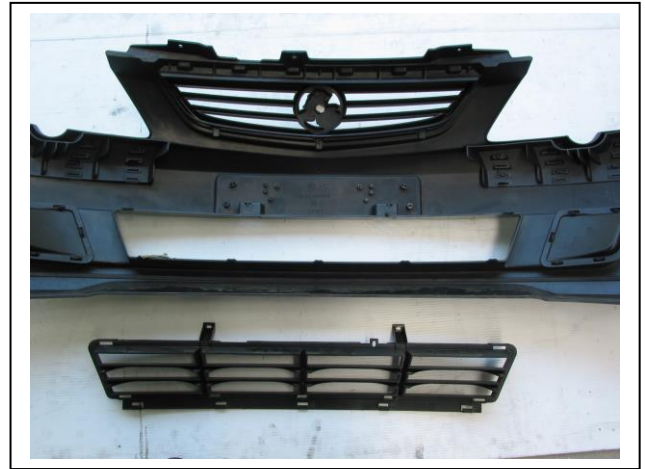


Figure 20 – Executive Model shown

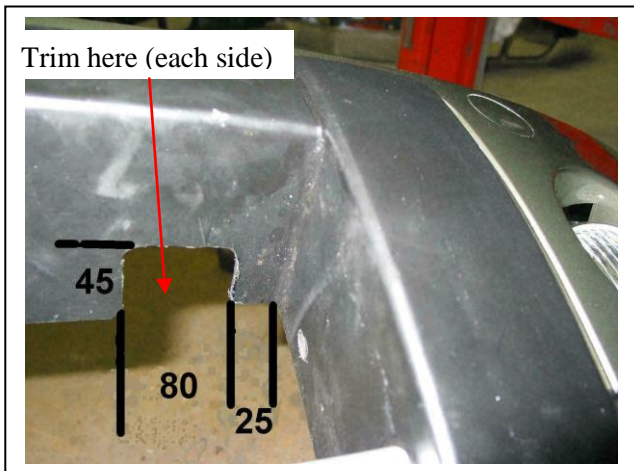


Figure 21 – Adventra and Cross 8 trim shown

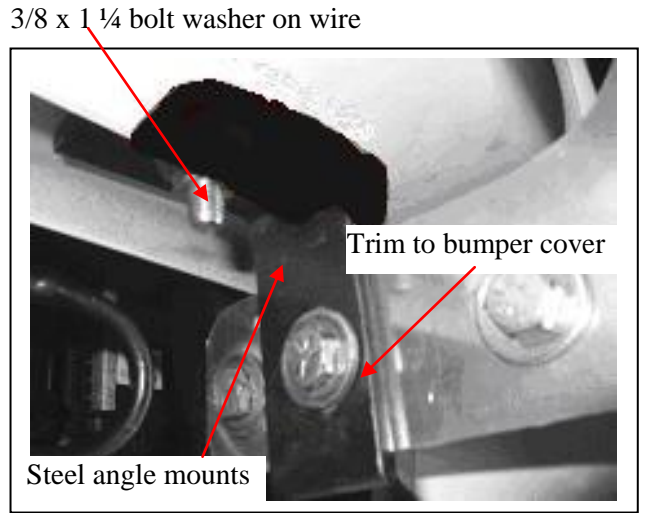


Figure 22 - SS Model shown

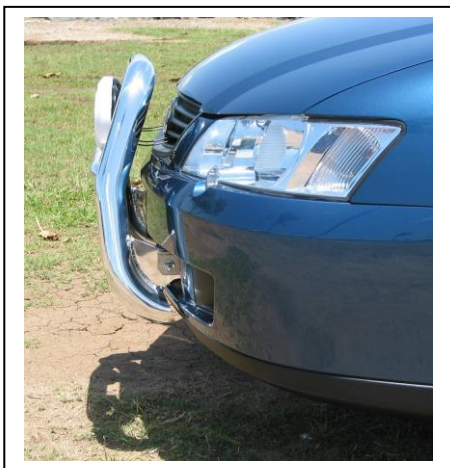


Figure 23 – Executive / Acclaim 63mm Series 2 Nudge Bar shown



Figure 24– SS 63mm Series 2 Nudge Bar shown



**WORLD'S BEST
ALLOY BULLBARS**

East Coast Bullbars (ECB Pty Ltd)

Tel: 07 3897 5700

Fax: 07 3283 1168

ecb@ecb.com.au www.ecb.com.au

29 Snook St
Clontarf QLD 4019
Australia

Po Box 122
Margate QLD 4019
Australia



Figure 25 – Adventra / Cross 8 63mm Series 2
Nudge Bar shown



**WORLD'S BEST
ALLOY BULLBARS**

East Coast Bullbars (ECB Pty Ltd)

Tel: 07 3897 5700

Fax: 07 3283 1168

ecb@ecb.com.au www.ecb.com.au

29 Snook St
Clontarf QLD 4019
Australia

Po Box 122
Margate QLD 4019
Australia

We value your comments

Dear Fitter,

ECB would like to know how you went with the installation of this product. We value your comment and may need to contact you to clarify some details so please complete your contact details clearly.

We would appreciate if you could complete as many of the following details as possible.

Your Name:	Your contact No.
Product Part No.	Product Invoice No.
Product Description:	Make, model, and year of vehicle:
Product Work Order No.	Company your from/Company product purchased from:

Date of Fitment: ____/____/____

Was the fitting hardware supplied complete?

Yes

No

If no what was not supplied

Did the installation go well?

Yes

No

Please provide comments

Please draw diagrams if you need to.

Post to
Reply Paid 122
PO Box 122
Margate QLD 4019

Fax to
(07) 3283 1168



WORLD'S BEST
ALLOY BULLBARS

East Coast Bullbars (ECB Pty Ltd)

Tel: 07 3897 5700

Fax: 07 3283 1168

ecb@ecb.com.au www.ecb.com.au

29 Snook St
Clontarf QLD 4019
Australia

Po Box 122
Margate QLD 4019
Australia

DESPATCH CHECKLIST NB6H14SY / NB6H12SY

ICZBKTH14



Work Order #		See other side of this page for photos of all mounts
Finish:		
Transport:		
Due Date:		

- 2 – Steel mounting brackets (pair)
- 2 – Steel angle brackets (pair)
- 2 – Steel support brackets (pair)
- 1 – Bolt Kit



Is this product “the best it can be” Yes _____ / _____

Wrapper's initials / Checker initials

If **NO** fix before continuing

All parts checked and completed by:

Nut and bolts: _____ Date __/__/__

Order control: _____ Date __/__/__

Final wrap check: _____ Date __/__/__



East Coast Bullbars (ECB Pty Ltd)

Tel: 07 3897 5700

Fax: 07 3283 1168

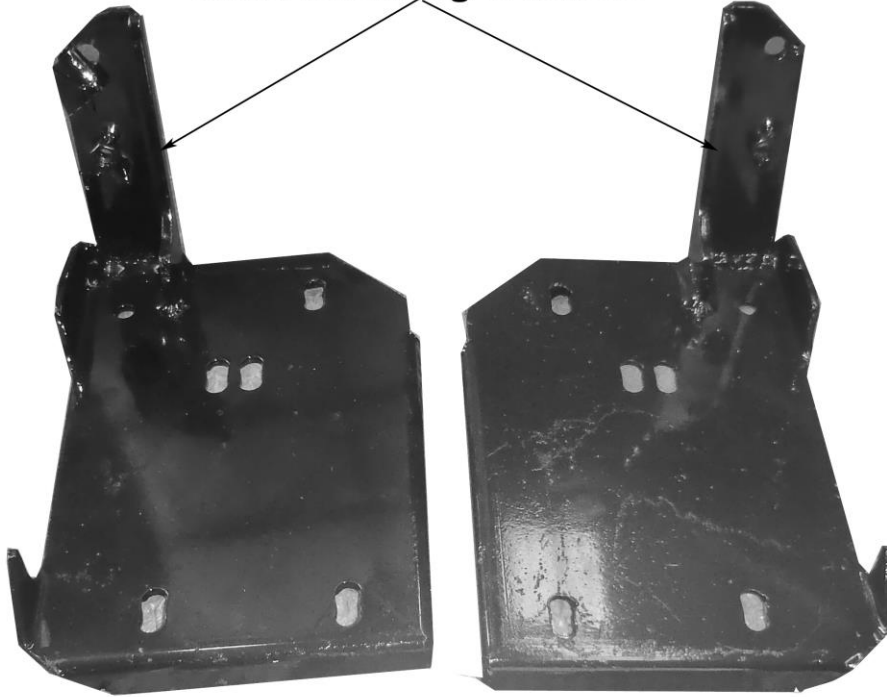
ecb@ecb.com.au www.ecb.com.au

29 Snook St
Clontarf QLD 4019
Australia

Po Box 122
Margate QLD 4019
Australia

WORLD'S BEST
ALLOY BULLBARS

Steel mounting brackets



Steel support brackets



Steel angle brackets

